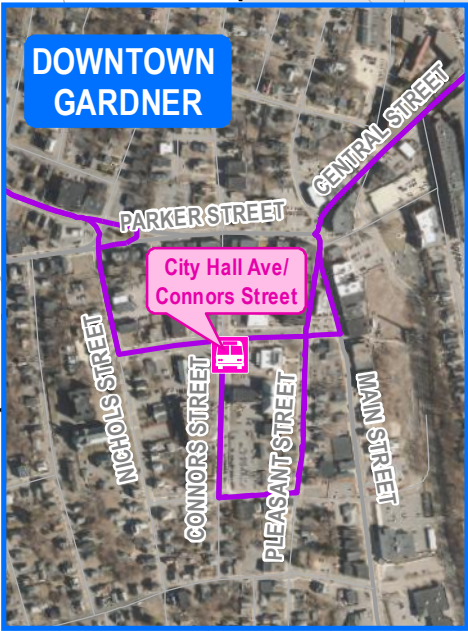
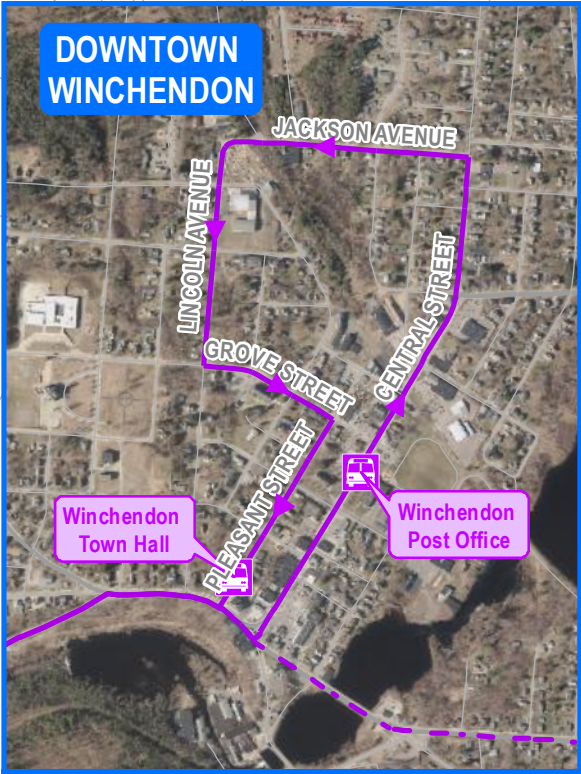
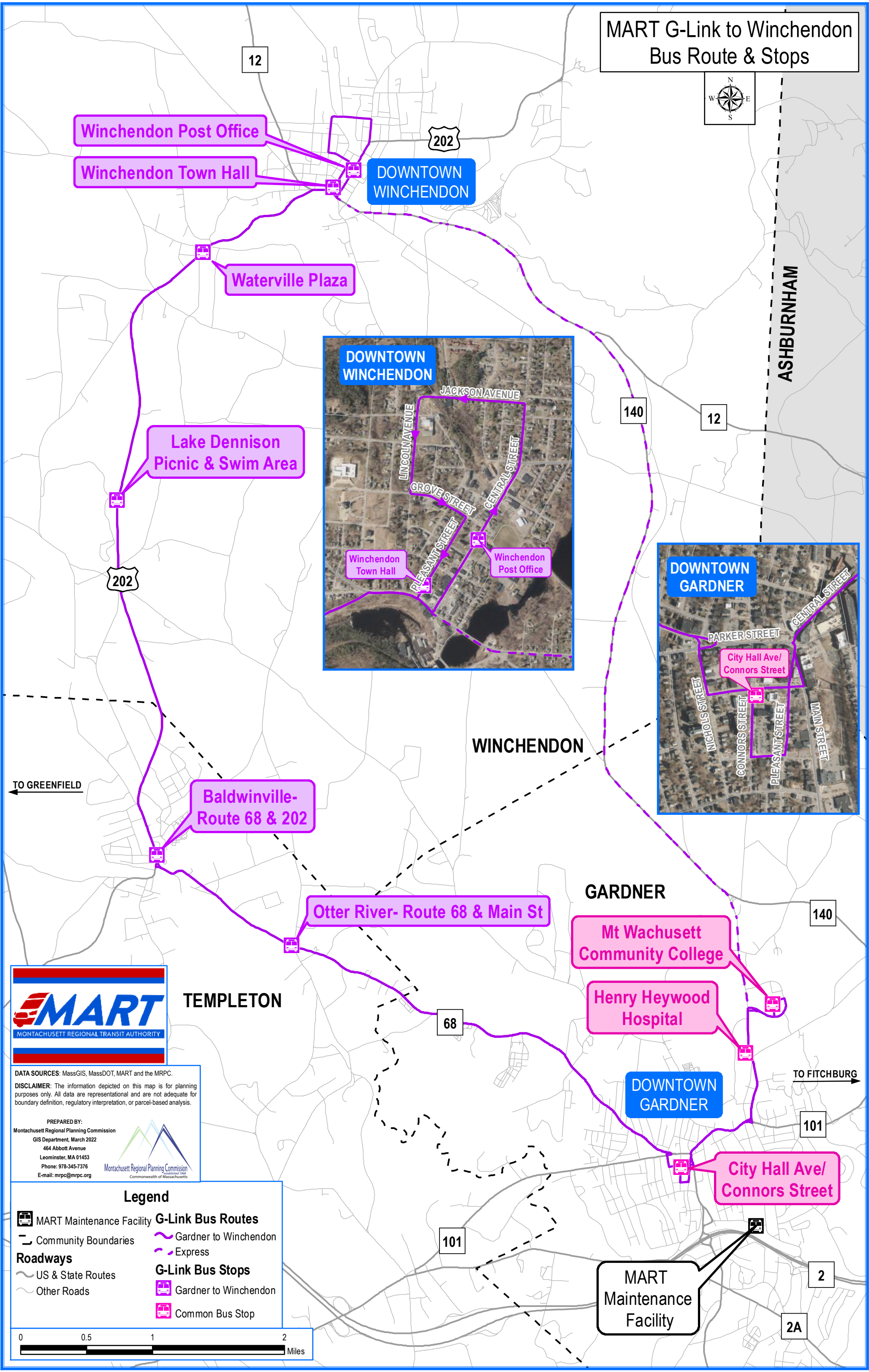


MART G-Link to Winchendon
Bus Route & Stops



DATA SOURCES: MassGIS, MassDOT, MART and the MRPC.
DISCLAIMER: The information depicted on this map is for planning purposes only. All data are representational and are not adequate for boundary definition, regulatory interpretation, or parcel-based analysis.

PREPARED BY:
Montachusett Regional Planning Commission
GIS Department, March 2022
464 Abbott Avenue
Leominster, MA 01453
Phone: 978-345-7376
E-mail: mrpc@mrpc.org

- Legend**
- MART Maintenance Facility
 - Community Boundaries
 - Roadways
 - US & State Routes
 - Other Roads
 - G-Link Bus Routes
 - Gardner to Winchendon
 - Express
 - G-Link Bus Stops
 - Gardner to Winchendon
 - Common Bus Stop

